

prodigy<sup>®</sup>  
simple + affordable



 **CRESTRON**



## » Welcome Home

Prodigy® by Crestron, the most respected and trusted name in home automation, is control without compromise. Installed in more homes worldwide than all other brands combined, Crestron is the global standard in luxury homes. Backed by Crestron quality, expertise and support, Prodigy provides the power and scalability you'd expect at a price you can afford. Now every house can be a Crestron home with Prodigy.

Prodigy offers affordable, simplified control of your home and entertainment from any room in your house or any place on the planet. Keep all your music, movies, lights, thermostats and security at your fingertips wherever you are and wherever you go. You are always in touch and in control with Prodigy. Make your home the perfect sanctuary where you can escape everyday stress. Just a simple tap of your finger brings you serenity, comfort, convenience and pleasure. Prodigy does all the thinking so you don't have to.

# prodigy®

## Simple to Install

Prodigy products are all specially designed to work together seamlessly, so there's no special wiring or expensive installation. Fast, reliable wireless solutions mean that any home system can be set up quickly and easily, saving time and money.

## Easy to Use

Prodigy intelligently manages home entertainment, lights and thermostats for you, so you just instinctively press a button and Prodigy serves up whatever you desire. Prodigy delivers modern home management and keeps you in control.

## Affordable

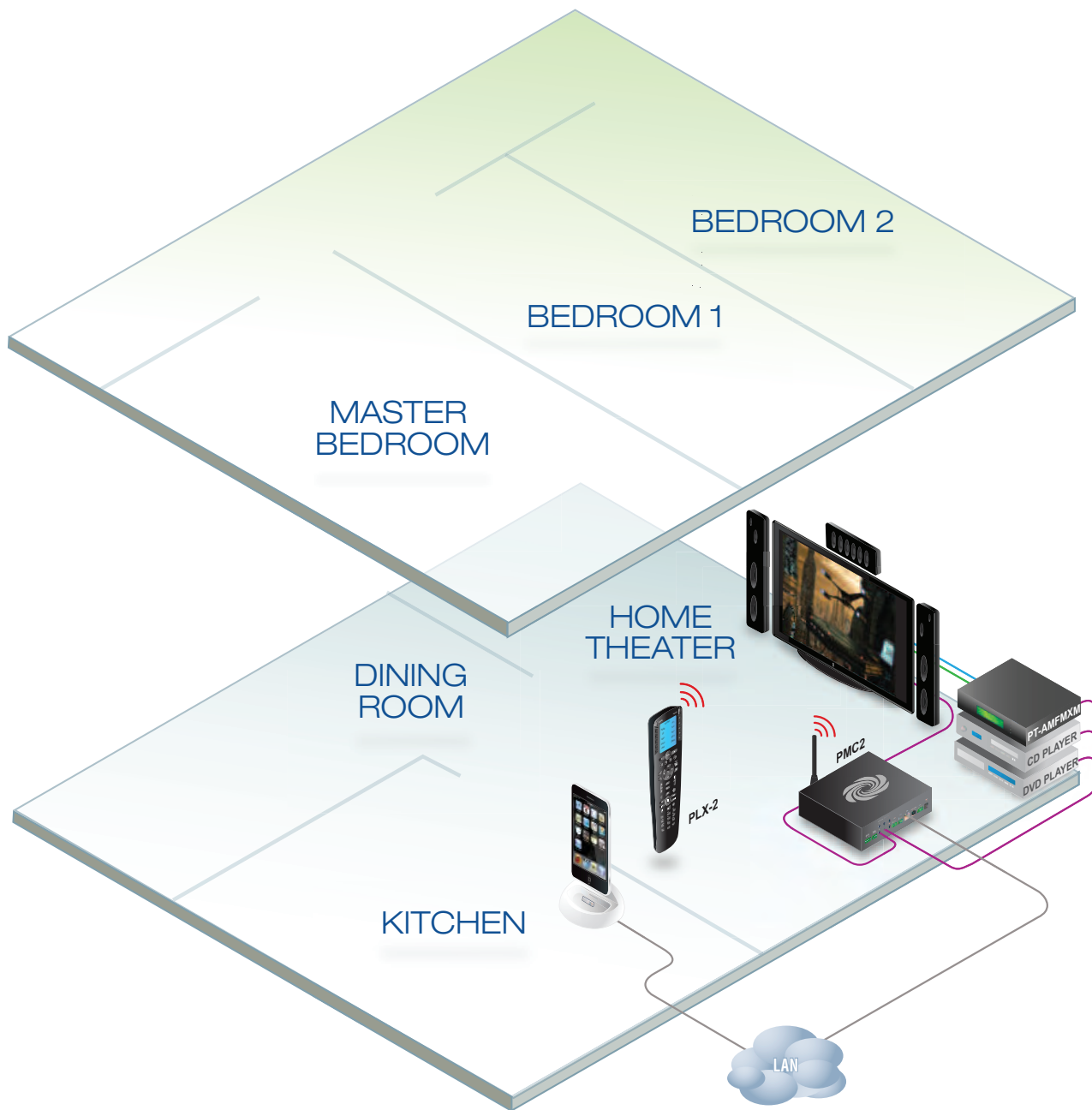
Peace of mind, security and happiness are not luxuries reserved for the privileged. Prodigy provides the highest level of home entertainment, comfort and convenience for every family, every lifestyle and every budget. Built on a flexible, scalable platform, you can start with home theater today; distribute music throughout the house tomorrow, then add lighting and climate control—even remote control from laptops and mobile devices.

Prodigy is so smart it will even save money after it's installed. Conserve energy and reduce costs without compromising comfort. Dim lights or turn them off automatically when the room is vacant. Install multiple thermostats to create smaller zones for heating and cooling, and create temperature setpoints for simple, effective environmental control. Prodigy intelligently manages lighting and temperature in the house to shrink your carbon footprint and your electric bill.





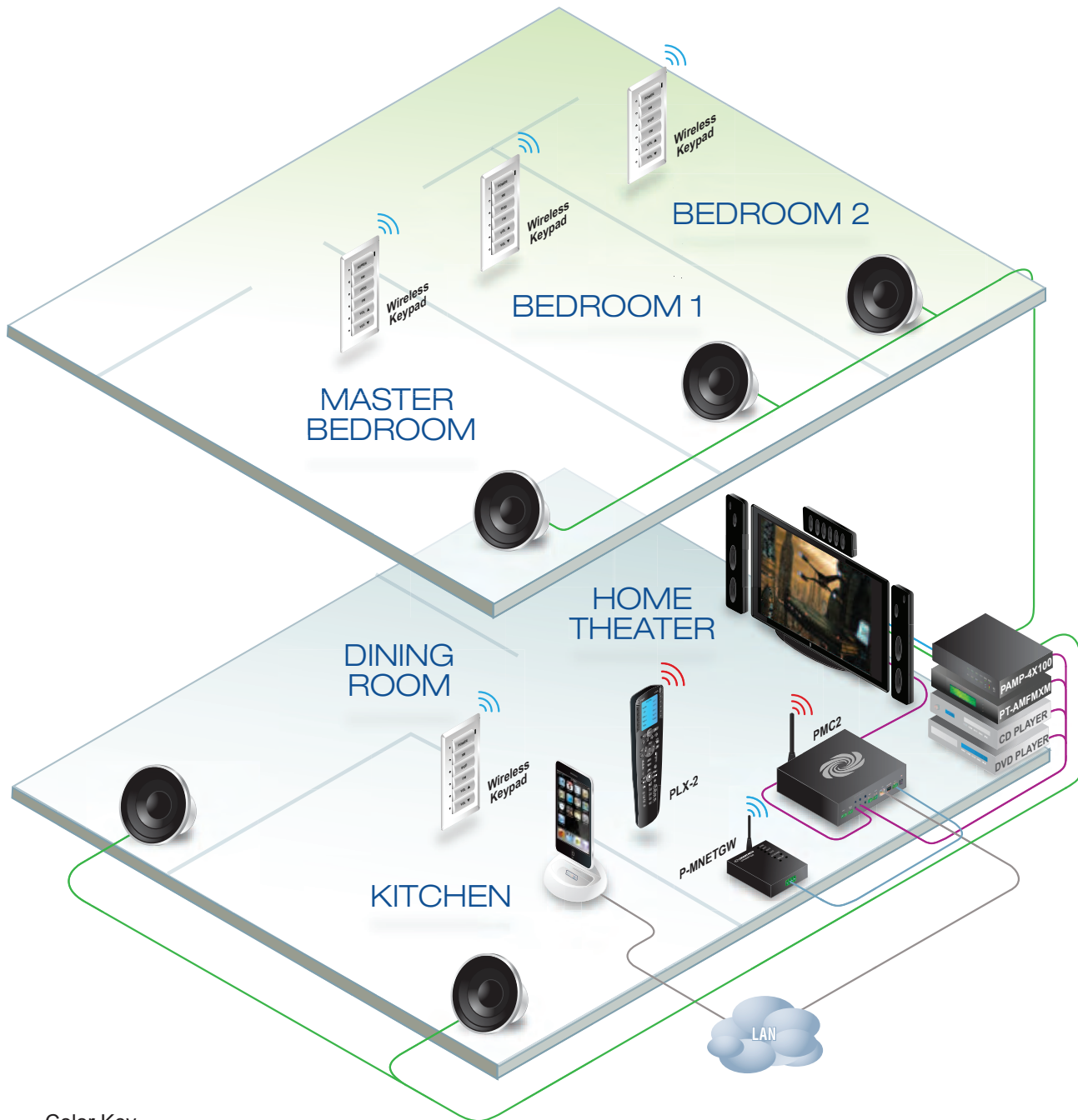
# Simple Wireless Home Theater...



## Color Key

- Control
- Video
- Audio
- LAN
- Cresnet

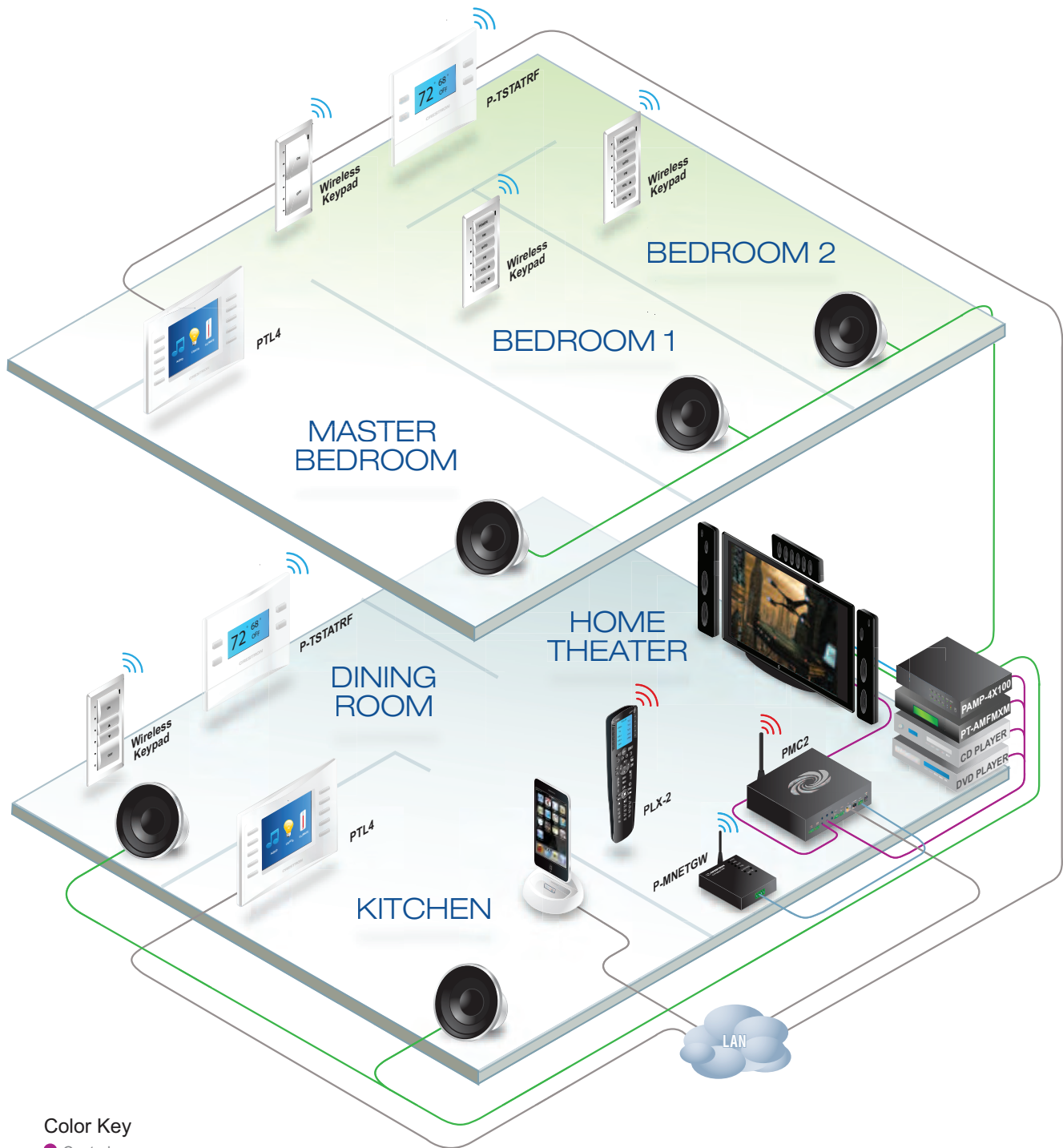
# add Whole House Audio...



**Color Key**

- Control
- Video
- Audio
- LAN
- Cresnet

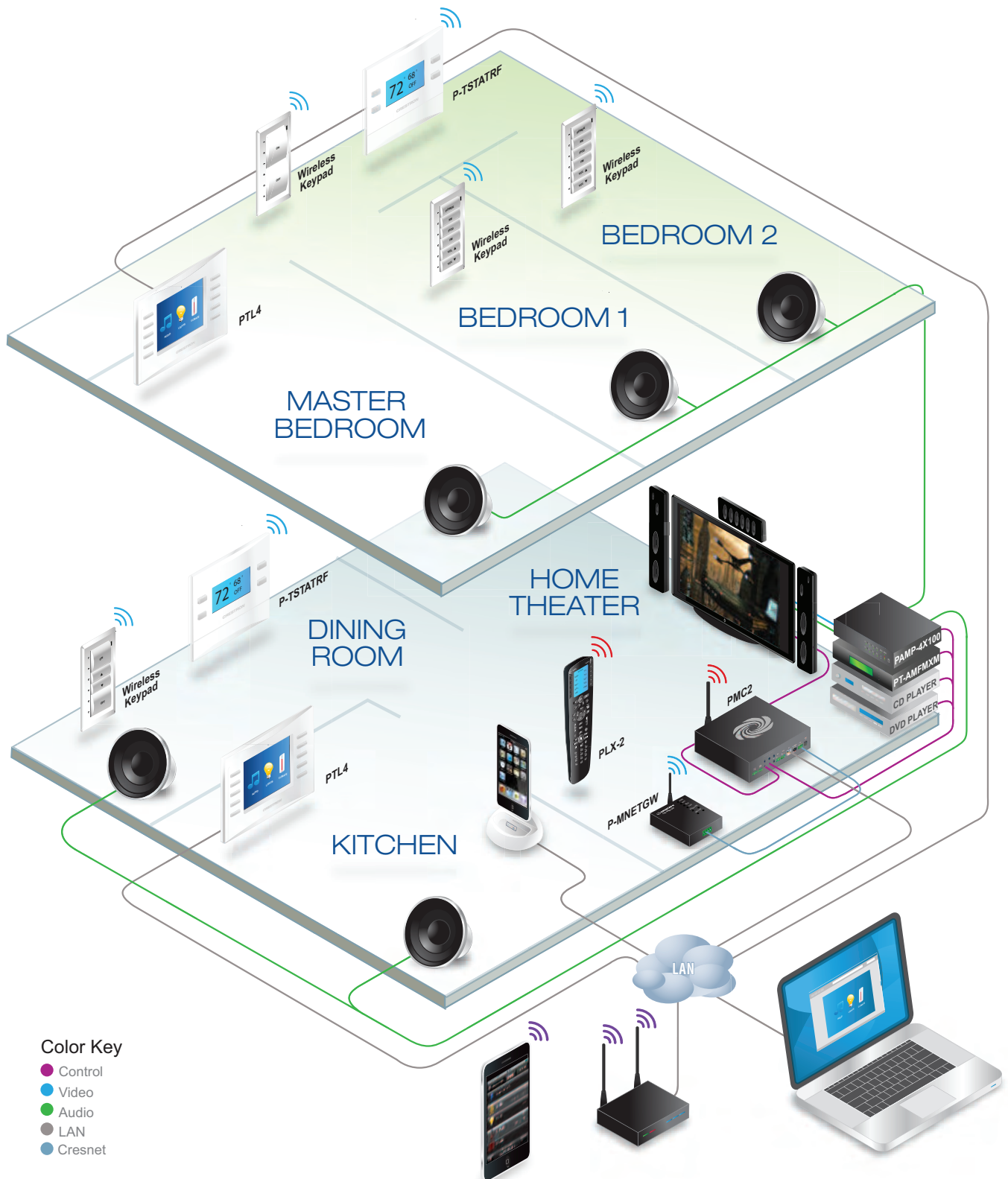
# Wireless Lighting and Climate Control...



## Color Key

- Control
- Video
- Audio
- LAN
- Cresnet

# and Remote Control from Web Devices

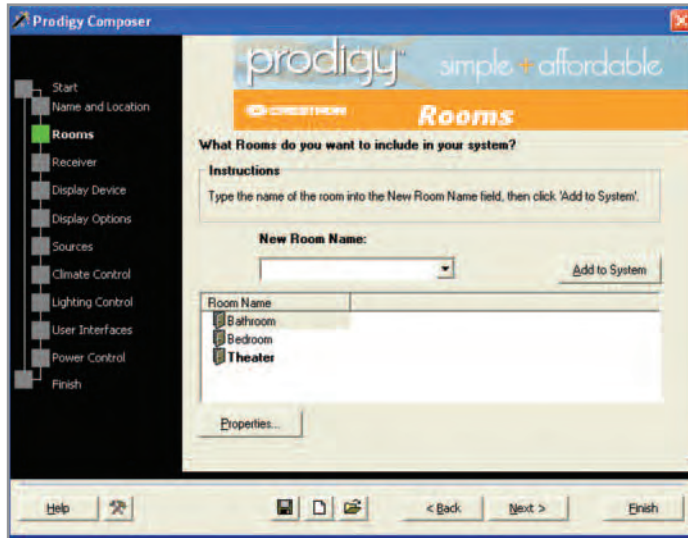


# Prodigy Composer Setup Wizard

Prodigy is easy to set up. There's no system design or expensive installation. The software guides you through a few simple steps using basic drop down menus and check boxes.

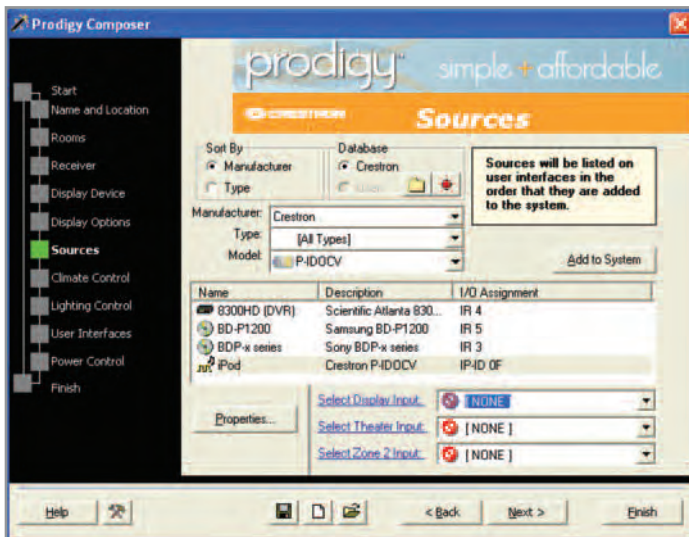
## It's as easy as 1-2-3.

step 1



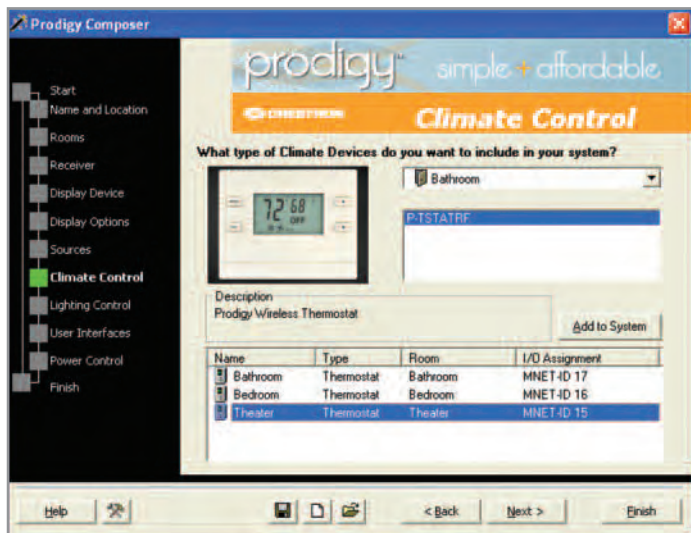
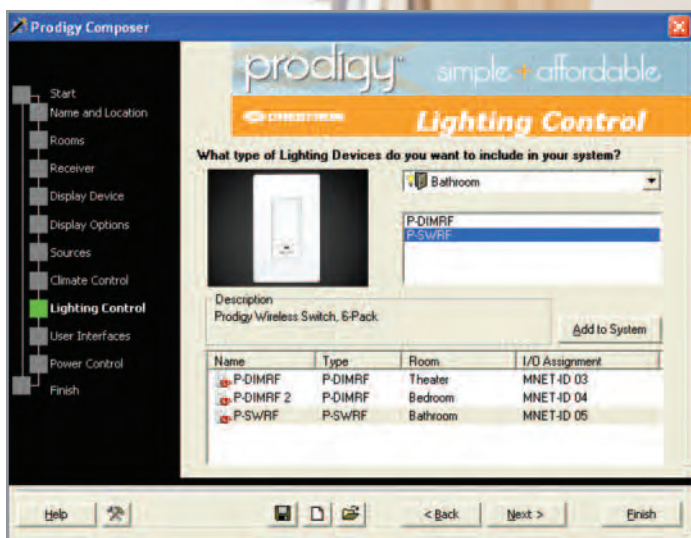
select rooms

step 2 choose sources + controllers





# step 3 enjoy!



That's it—you're done.

You can even add lighting and climate control if you want.

Prodigy Composer provides all the logic and creates touchscreen interfaces automatically in the background. The wizard is intuitive, so anyone can get a system up and running in minutes without any training.

# Central Controllers

## PMC2 Prodigy® Central Controller



- ▶ Supports touchpanels, remotes, keypads, thermostats, dimmers and switches
- ▶ Supports Web-based control from PCs, laptops and mobile devices
- ▶ Simple configuration with Prodigy Composer software

# Lighting Control and Keypads

## P-DIMRF Prodigy® Dimmer



- ▶ Control lights directly or access preset levels
- ▶ Simple wireless installation in a standard 1-gang box
- ▶ Automatic discovery for fast, easy setup
- ▶ Built on the fastest, most reliable Crestron communications network

## P-SWRF Prodigy® Switch



- ▶ Control lights directly or access preset levels
- ▶ Simple wireless installation in a standard 1-gang box
- ▶ Automatic discovery for fast, easy setup
- ▶ Built on the fastest, most reliable Crestron communications network

## P-CBD Prodigy® Lighting Keypad



- ▶ Low cost room controller for lighting; pre-engraved buttons included
- ▶ Configurable with two or four buttons
- ▶ Simple wireless installation in a standard 1-gang box
- ▶ Automatic discovery for fast, easy setup
- ▶ Built on the fastest, most reliable Crestron communications network

## P-CBD-AD Prodigy® Audio Keypad



- ▶ Low cost six button room controller for audio source select and volume
- ▶ Simple wireless installation in a standard 1-gang box
- ▶ Automatic discovery for fast, easy setup
- ▶ Built on the fastest, most reliable Crestron communications network

# Climate Control

## P-TSTATRF Prodigy® Thermostat



- ▶ Controls baseboard, forced air and heat pump HVAC systems
- ▶ Adjust setpoints from thermostat, remotes and touchpanels
- ▶ Connect up to three thermostats
- ▶ Simple wireless installation in a standard 1-gang box
- ▶ Automatic discovery for fast, easy setup
- ▶ Built on the fastest, most reliable Crestron communications network

## Touchpanels

### PTL4 Prodigy® In-Wall Touchpanel



- ▶ Simple control of home entertainment, lights and thermostats throughout the house
- ▶ Easy installation via standard Ethernet connection
- ▶ Built-in design templates provided

### PTX3 Prodigy® Handheld Touchpanel



- ▶ 2.8" active-matrix touchscreen
- ▶ Ergonomic design provides easy control for any member of the family
- ▶ 27 individual pushbuttons provide intuitive, tactile control
- ▶ Up to six PTX3s can be used with the PMC2 at distances up to 50 feet away

## Other Related Products

### P-IDOCV Interface for Apple® iPod®



- ▶ Watch videos and listen to music throughout the home from up to two iPods
- ▶ View cover art; select titles, artists and albums – even scroll through playlists right from remotes and touchpanels, iPhone® and iPod touch®
- ▶ Automatically syncs with iTunes® without undocking

### PT-AMFMXM Radio Tuner



- ▶ Select audio in any room in the house from built-in AM/FM/XM tuners
- ▶ Select channel presets from keypads and view station and song information from remotes and touchpanels, iPhone and iPod touch

### PAMP-4X100 Processor Amplifier



- ▶ Provides high quality stereo audio to multiple rooms and home theater
- ▶ Six audio sources to four rooms at 50 watts per channel
- ▶ Expandable up to 12 rooms
- ▶ Adjust levels and select sources from front panel, remotes, touchpanels and keypads

## Accessories

### P-EXPEX Prodigy® Wireless Expander



- ▶ Extends range up to 150' indoors
- ▶ Up to 10 expanders can be added
- ▶ Automatic discovery for fast, easy setup
- ▶ Wi-Fi friendly channel assignment

### P-MNETGW Prodigy® Wireless Gateway



- ▶ Supports dimmers, switches, keypads and thermostats
- ▶ Up to 150' range indoors
- ▶ Automatic discovery for fast, easy setup
- ▶ Wi-Fi friendly channel assignment

# Central Controllers

## PMC2 Prodigy® Central Controller



The Prodigy® Central Controller is the heart of a Prodigy system. Built by Crestron® for Prodigy, it is the result of decades of innovation. The Central Controller transforms your button presses into customized actions: simultaneously turn on the TV, dim the lights, and play back your favorite movie. It's also your outside link to what's going on inside your home. Connect via iPhone® to turn on lights when you're away, adjust the temperature before you get home, and make sure your security system is always in check.

Simplify your life. Let Prodigy consolidate remote controls, reduce energy bills, and alleviate frustration. Intelligent light dimmers help maximize bulbs and save money on your electric bill. Controlled thermostats help keep the atmosphere comfortable while saving money. This peace of mind empowers you to focus on what's really important in life.

Because it's built on proven Crestron wireless technology, the Prodigy Central Controller works flawlessly through walls and between floors. Neatly tuck away cable boxes and Blu-ray players out-of-site and let the Central Controller take charge, responding to your every request. And because it's wireless, there's no need to rip up walls and run wires. Don't design the living space around technology. Instead, design the technology around the living space. Prodigy truly makes life simple + affordable.

### Control at Home or Away

**Always stay connected where you are.**

- ▶ Safe, secure and reliable Crestron technology lets you turn on the lights, adjust the temperature, and arm security from thousands of miles away
- ▶ Use any Prodigy Touchpanel, iPhone® or iPod touch® to effortlessly get the most out of your home
- ▶ Control music, TV, lights, and climate from one simple interface

### Quick Install

**Whole house automation can be easily enabled without having to run new control wire.**

- ▶ With the simple connection of a Prodigy Wireless Gateway, the PMC2 can support numerous remotes, dimmers, switches and thermostats
- ▶ Other home automation features such as interfacing to a security system can be managed right through the home LAN

### Fast, Easy Setup

**Prodigy Composer software makes setup a breeze—and saves money.**

- ▶ Without any special knowledge, a fully functioning home theater with whole home lighting and climate control can be configured in mere minutes
- ▶ Extensive Crestron library of thousands of 3rd party devices means control of any TV, surround receiver, or other AV device
- ▶ Easily customize functionality through intuitive drag-and-drop programming

### Beyond the Universal Remote

**Interactive user interfaces control more than just the entertainment center.**

- ▶ View song and radio station names, as well as current temperature and other info from handheld remote and touchpanels
- ▶ Wireless technology means not needing to point the remote anywhere in particular to make it work
- ▶ Multiple interfaces around the home afford control in different zones—change songs in the den while adjusting volume in the living room

### A Control Solution for Every Budget

**Now the innovation, flexibility and reliability of Crestron automation are available in an economical package.**

- ▶ Replace a table full of remotes with one integrated package
- ▶ Start with one room and expand control to other spaces as budget allows
- ▶ Control lights, temperature, media and much more



## SPECIFICATIONS

### Wireless

**RF Transceiver:** 2-way RF, 2.4 GHz ISM Channels 11-26 (2400 to 2483.5 MHz), default channel 15; IEEE 802.15.4 compliant

**Range (typical):** 100' indoor, subject to site-specific conditions

**Supported Devices:** Up to 6 PLX2 remotes;  
Up to 6 PTX3 Handheld Touchpanels

### Ethernet

10BaseT/100BaseTX, auto-negotiating, full/half duplex, static IP or DHCP/DNS, SSL, TCP/IP, UDP/IP, CIP, SMTP, built-in e-Control Web Server and e-mail client

### Connectors

**Relay 1-2:** Detachable terminal block with (2) relay control outputs for screen, lift, shades, fireplace, etc.;  
Rated 1 Amp, 30 Volts AC/DC;  
MOV arc suppression across contacts

**Input 1-2:** Detachable terminal block with (2) digital or analog control inputs for sensing logic signals, contact closures, occupancy sensors, or photocells;  
Digital Logic Threshold: 1.25 Volts DC;  
Analog Input Range: 0-10 Volts DC;  
Rated 0-24 Volts DC

**IR 1-5:** (5) Mini phone jack IR/Serial control outputs for STIRP IR Emitter probes (included); IR Frequency: up to 1.2 MHz; 1-way TTL/RS-232 (0-5 Volts) up to 115.2k baud

**IR IN:** (Not used)

**COM 1-2:** (2) Detachable terminal block bidirectional RS-232 control ports; Supports up to 115.2k baud with software handshaking

**LAN:** RJ45 10BaseT/100BaseTX Ethernet port;  
Green LED indicates link status;  
Yellow LED indicates Ethernet activity

**Computer:** USB Type B computer console port;  
Connects to computer for setup and programming

**NET:** Detachable terminal block network communications port for other Prodigy devices

**24VDC 0.7A:** DC power input for PW-2407W power supply (included)

**Antenna (front):** Connection for supplied antenna

### Indicators and Buttons

**PWR:** Green power LED, indicates operating power supplied from external power pack

**HW-R:** Hardware reset button (reboots the system)

**SW-R:** Software reset button (restarts the SIMPL program)

**ACQUIRE:** Pushbutton with red LED for setting up wireless connections

**ACTIVITY:** Green LED, indicates wireless communications

### Power Requirements

**PMC2:** 18 Watts (0.75 Amp) @ 24 Volts DC  
(PW-2407W power supply included)

**PW-2407W (included):** 100-240 Volts AC, 50/60 Hz

### Environmental

**Temperature:** 41° to 113°F (5° to 45°C)

**Humidity:** 10% to 90% RH (non-condensing)

### Dimensions

**Height:** 2.04 in (5.17 cm)

**Width:** 8.00 in (20.32 cm)

**Depth:** 6.65 in (16.87 cm) including antenna

### Weight

31.54 oz (0.89 kg)

### Included Accessories

**PLX2:** Wireless Handheld Remote

**PW-2407W:** Power Supply

**STIRP:** (5) IR Emitter Probes

### Prodigy System Compatibility Chart \*

Model	System Maximum
PLX2	6
PTX3	6
PTL4	6
P-SWRF	18†
P-DIMRF	18†
P-CBD	6
P-MNETGW	1‡
P-IDOCV	2
PAMP-4X100	3
P-CBD-AD	12
PT-AMFMXM	2
P-TSTATRF	3
P-EXPEX	10

\* Only compatible Prodigy equipment is supported on the Prodigy control network

† Total of 18 dimmers or switchers or combination of the two, not to exceed 18 total

‡ Maximum of 30 wireless devices can be connected to a P-MNETGW wireless gateway

## PTL4 Prodigy® In-Wall Touchpanel



Bring home modern, hi-tech touch control with the Prodigy® In-Wall Touchpanel. Trade the walk to the stereo cabinet, loaded with too many confusing knobs and buttons, for a user-friendly graphic-driven touch screen experience in any room of the house. While at the In-Wall Touchpanel, even adjust the lights and temperature, and check for any open doors or windows. Get the most out of home and technology with Prodigy by Crestron®.

The Prodigy In-Wall Touchpanel displays a simple layout for all home control. Press the "Media" button and explore the music collection on your iPod® or iPhone®. Browse by artist, song and playlist in every room, as if the iPod was actually there. Visually select favorite radio stations by genre. Intuitive "Lights" and "Climate" buttons deliver exactly the controls needed to keep the home atmosphere comfortable and efficient. Quickly and easily schedule temperature set points for every day of the week and automatically dim up outdoor lights when the sun goes down.

The Prodigy In-Wall Touchpanel is your central hub to total home control. Bring home the power, reliability, and intelligence of Crestron in addition to decades of industry leading experience at an affordable price. Engineered with you in mind, Prodigy proves to be simple + affordable.

### Visual Home Control Hub

**Demand the most out of home technology with confidence.**

- ▶ Control music, TV, lights, climate, and even security from one simple interface
- ▶ Graphically displays song updates, temperature reading, light levels and more
- ▶ Reduce wall clutter with one simple interface

### Versatile Control

**Simplify life with one intuitive control device.**

- ▶ Touchscreen layout customized for each system
- ▶ Replace stacks of remote controls with just one
- ▶ Modern engraved faceplate frames bright color touchscreen to provide easy navigation

### A Control Solution for Every Budget

**Now the innovation, flexibility and reliability of Crestron automation are available in an economical package.**

- ▶ Control entire home from one touchpanel, or bring vivid graphics and intuitive interfaces to every room in the house
- ▶ Prodigy Composer software designs custom touchpanel in just a few clicks
- ▶ Power, simplicity, and reliability of Crestron is now a reality within reach

## SPECIFICATIONS

### Touchscreen Display

**Display Type:** TFT Active matrix color LCD

**Size:** 3.6 inch (9.1 cm) diagonal

**Aspect Ratio:** 4:3 QVGA

**Resolution:** 320 x 240 pixels

**Brightness:** 300 nits (cd/m<sup>2</sup>)

**Contrast:** 300:1

**Color Depth:** 16-bit, 64k colors

**Illumination:** Edgelit LED

**Viewing Angle:** ±80° horizontal, +80°/-50° vertical

**Touchscreen:** Resistive membrane

### Buttons

**Functions:** (10) Translucent white backlit pushbuttons, programmable

**Reset:** (1) Miniature pushbutton behind faceplate, used to reset touchpanel

### Graphics Engine

Isys™ engine; 16-bit non-palette graphics; 65,536 colors; Synapse™ image rendering algorithm, multi-mode objects, dynamic graphic, PNG translucency, full-motion (60 fps) animation

### Ethernet

10BaseT/100BaseTX, auto-switching, auto-negotiating, auto-discovery, full/half duplex, TCP/IP, UDP/IP, CIP, DHCP, IEEE 802.3U compliant

### Audio

**Hardware Features:** Built-in amplified speaker (rear), internal volume control

**Audio Feedback (WAV):** 8-bit PCM, mono, 8 kHz sampling rate

**Amplification:** 1 Watt for built-in speaker

### Connectors

**Power:** (1) 4-pin 3.5mm detachable terminal block, for local power only

**LAN:** (1) 8-wire RJ45 with 2 LED indicators; 10/100BaseT Ethernet port; Green LED indicates link status; Yellow LED indicates Ethernet activity

### Power Requirements

**Power Usage:** 5 Watts (0.21 Amp @ 24 Volts DC)

**PW-2407W (included):** 100-240 Volts AC, 50/60 Hz

### Environmental

**Temperature:** 32° to 104°F (0° to 40°C)

**Humidity:** 10% to 90% RH (non-condensing)

### Enclosure

**Construction:** Injection-molded plastic, flush-mountable using clips provided (additional mounting kits available)

**Faceplate:** Injection-molded plastic

### Dimensions

**Height:** 4.54 in (11.52 cm)

**Width:** 6.19 in (15.73 cm)

**Depth:** 2.13 in (5.40 cm)

### Weight

15.0 oz (0.43 kg)

### Included Accessories

**PW-2407W:** Power Supply

### Available Accessories

**BB-4L:** Pre-Construction Wall Mount Back Box

**MMK-4L:** Mud Ring

**PMK-4L:** Pre-Construction Wall Mount Kit

**TMK-4L:** Trim Ring

**WMKB-4L:** Replacement Wall Mount Clips

**WMKM-4L:** Post-Construction Wall Mounting Kit w/Mud Ring

**WMKT-4L:** Post-Construction Wall Mounting Kit w/Trim Ring

## PTX3 Prodigy® Handheld Touchpanel



Take complete control of your home with the Prodigy® Handheld Touchpanel. Wirelessly control music, TV, lights, and temperature from the ultra-crisp color display together with the Prodigy Media Controller. Channel surf or browse your iPod® using the simple tactile buttons. It's so light and ergonomic that you may forget it's in your hand.

Let Prodigy consolidate control and simplify your life. Imagine powering up the TV, Blu-ray player, and surround receiver, switching to the correct inputs, and dimming the lights (just because you can)—with the single push of a button. Make your dream a reality with Prodigy.

The Prodigy Handheld Touchpanel is built on proven Crestron® wireless technology, so you know that it will perform flawlessly. It integrates seamlessly with the Prodigy Central Controller and it's backed by decades of industry leading experience. Finally, a touchpanel with pro features that is truly simple + affordable.

### Ultimate Handheld Touchpanel

**Sleek and smart takes front and center.**

- ▶ Control music, TV, lights, and climate from a simple interface
- ▶ So smart, the screen turns on when it's picked up
- ▶ Graphically displays song updates, temperature reading, light levels and more

### Versatile Control

**Simplify life with one intuitive control device.**

- ▶ Replace stacks of remote controls with just one
- ▶ Bright color touchscreen complements simple tactile buttons
- ▶ Built-in rechargeable battery with charging dock

### A Control Solution for Every Budget

**Now the innovation, flexibility and reliability of Crestron automation are available in an economical package.**

- ▶ Easy setup in minutes
- ▶ Power, simplicity, and reliability of Crestron is now a reality within reach
- ▶ Add to system when budget allows



## SPECIFICATIONS

### Touchscreen Display

**Display Type:** Transflective TFT active matrix color LCD

**Size:** 2.8 inch (7.2 cm) diagonal

**Aspect Ratio:** 3:4 QVGA (portrait orientation)

**Resolution:** 240 x 320 pixels

**Brightness:** 350 nits (cd/m<sup>2</sup>) typical

**Contrast:** 500:1 typical

**Color Depth:** 16-bit, 64k colors

**Viewing Angle:** ±75° horizontal, +75/-55° vertical

**Illumination:** LED Backlit

**Touchscreen:** Resistive membrane

### Buttons and Indicators

**Power (top):** (1) programmable pushbutton, performs hardware reset if held for >10 seconds

**Hard Keys:** (3) programmable pushbuttons below touchscreen

**Functions:** (15) programmable pushbuttons with white EL backlit labeling for GUIDE, HOME, LIST, MUTE, INFO, LAST, MENU, KEYPAD, EXIT, and icons for Rewind, Play, Forward, Stop, Pause, Record

**Volume:** (1) programmable rocker button with white EL backlit Volume 'Raise' and 'Lower' icons

**Navigation Pad:** (5) programmable pushbuttons comprising a 5-way thumbpad (4-way navigation plus "enter")

**Up/Down:** (1) programmable rocker button with white EL backlit 'Up' and 'Down' arrows

**More (right side):** (1) programmable thumb-operated side button

**Charge:** (1) Green LED, indicates charging status when docked

### Graphic Engine

Isys i/O<sup>®</sup> engine, 16-bit non-palette graphics; 65,536 colors; Synapse™ image rendering algorithm; multi-mode objects; dynamic graphics and text; PNG translucency; full-motion (60 fps) animation; transition effects

### Wireless

**RF Transceiver:** 2-way RF, 2.4 GHz ISM channels 11-26 (2400 to 2483.5 MHz), default channel 15; IEEE 802.15.4

**Range:** 50 feet (15 m), subject to environmental conditions; Range can be increased by adding P-EXPEX wireless expander

**Gateway:** Requires PMC2

### Tilt Sensor

Touchpanel wakes within 0.5 second when physical orientation is moved from horizontal to vertical

### Connectors

USB (bottom): (1) Mini Type AB female behind battery cover; USB 1.1 computer console port, cable included

### Battery

**Battery Type:** Lithium Polymer, 3.7 Volt, 1000 mAh (included)

**Usage per Charge:** 5 hours continuous at full brightness

**Charging Time:** 2 hours

**Cycle Life:** >300 cycles (80% capacity)

### Power Requirements

**PTX3-DS Docking Station/Charger (included):** 1.5 Amps @ 12 Volts DC

**PW-1215WU Power Supply (included):** 0.6 Amp @ 100-240 Volts AC, 50/60Hz

### Environmental

**Temperature:** 32° to 104°F (0° to 40°C)

**Humidity:** 10% to 90% RH (non-condensing)

**Heat Dissipation:** 5 BTU/Hr

### Enclosure

**Construction:** Injection-molded plastic, integral docking station port

### Dimensions

**Height:** 1.04 in (2.63 cm)

**Width:** 2.55 in (6.48 cm)

**Depth:** 7.94 in (20.17 cm)

### Weight

6.5 oz (.18 kg) including battery

### Included Accessories

**PTX3-DS:** Docking Station/Charger

**PTX3-BTP:** Internal Battery Pack

**PW-1215WU:** Power Supply

### Available Accessories

**P-EXPEX:** Wireless Expander

## P-DIMRF Prodigy® Dimmer



The Prodigy® Dimmer completes full home automation by providing controlled dimming at an affordable price. In conjunction with any Prodigy Touchpanel or Remote, wirelessly dim lamps from the couch or bed. Designed around electrical standards, the Prodigy Dimmer is quick and easy to install in both new and retrofit applications. Proven Crestron® wireless technology ensures reliable operation even when commissioned in the most urban setting.

Save energy and money with Prodigy Dimmers. Gradually ramp dim level of standard light bulbs to reduce filament wear and diminish frequency of bulb replacement. Limit dim levels to decrease electricity usage. Automatically switch off lights in unoccupied spaces. Set timers to turn on lights anywhere at home. Already affordable, Prodigy will continue to save you money.

### Intelligent Control

#### Use your lights smarter.

- ▶ Dim lights to reduce wear and create a more pleasant atmosphere
- ▶ Automatically control holiday or security lights
- ▶ Save money and energy by limiting maximum brightness

### Versatile Control

#### Dim every light around the home.

- ▶ Ensure all lights are off when you leave the house—with just a single button press
- ▶ Recall custom scenes for the perfect lighting level in every room

### A Control Solution for Every Budget

#### Now the innovation, flexibility and reliability of Crestron automation are available in an economical package.

- ▶ Wireless technology means it's quicker and easier to install, saving money
- ▶ Grow home automation as budget allows
- ▶ Power, simplicity, and reliability of Crestron is now a reality within reach

## SPECIFICATIONS

### Load Ratings

---

**Incandescent/Tungsten Halogen or Electronic Low Voltage:** 1000 Watts; 700 Watts, one side fin removed; 550 Watts, both side fins removed

**Magnetic Low Voltage or Neon/Cold Cathode:** 1000VA/750 Watts; 700VA/500 Watts, one side fin removed; 550VA/400 Watts, both side fins removed

**Minimum Load:** 40 Watts, 0.5 Amps

### Power Requirements

---

120 Volts AC, 60Hz, line power, neutral required

### LED Indicator

---

(1) Amber LED, flashes in various patterns to warn when in SET mode, while counting down to turn-off, to confirm a new delay time setting, and to indicate setup and communication status; normally glows dim in RUN mode to provide a locating beacon in the dark

### Controls

---

**Button:** 2-position rocker pushbutton for dimming control and preset store/recall

**Mode Switch:** 3-position slide switch; selects RUN, SET, or OFF mode

**Dimming Ramp:** Rate 5 seconds (default), software adjustable 0.01 to 10 seconds

**Preset Fade Time:** 2 seconds (default), software adjustable 0.01 to 120 seconds

### Wireless

---

**RF Transceiver:** 2-way RF, 2.4 GHz ISM Channels 11-26 (2400 to 2483.6 MHz), IEEE 802.15.4 compliant

**RF Output Power:** 10 mW

**Range (typical):** 150 feet indoor, 250 feet outdoor, subject to site-specific conditions;

**Gateway:** requires P-MNETGW gateway/transceiver

### Connections

---

**Hot:** (1) 14 AWG Class 1 flying lead, black, line power input

**Load:** (1) 14 AWG Class 1 flying lead, red, load output

**Neutral:** (1) 18 AWG Class 1 flying lead, white, neutral

**Ground:** (1) 16 AWG Class 1 flying lead, green, ground

### Environmental

---

**Temperature:** 32° to 104°F (0° to 40°C)

**Humidity:** 10% to 90% RH (non-condensing)

### Enclosure

---

1-gang mountable in a 3-1/2 inch deep electrical box;

### Dimensions

---

**Height:** 4.13 in (10.48 cm)

**Width:** 2.38 in (6.03 cm)

**Depth:** 1.88 in (4.77 cm)

### Weight

---

4.9 oz (0.67 kg)

### Available Accessories

---

**P-MNETGW:** Wireless Gateway

## P-SWRF Prodigy® Switch



The Prodigy® Switch completes full home automation by providing controlled electrical switching at an affordable price. In conjunction with any Prodigy Touchpanel or Remote, wirelessly switch on fans or landscape lights from the couch or power up the fluorescent lights in the garage. Designed around electrical standards, the Prodigy Switch is quick and easy to install in both new and retrofit applications. Proven Crestron® wireless technology ensures reliable operation even when commissioned in the most urban setting.

Save energy and money with Prodigy Switches. Automatically switch off lights in unoccupied spaces. Set timers to turn on lights anywhere at home, eliminating frustration with confusing timer switches. Already affordable, Prodigy will continue to save you money.

### Intelligent Control

**Use your lights smarter.**

- ▶ Automatically control holiday or security lights
- ▶ Save money and energy by limiting power-on time

### Versatile Control

**Switch fans or fluorescents anywhere around the home.**

- ▶ Simply control all electrical devices in the home, including fans
- ▶ Ensure all lights are off when you leave the house—with just a single button press
- ▶ Recall custom scenes for the perfect lighting in every room

### A Control Solution for Every Budget

**Now the innovation, flexibility and reliability of Crestron automation are available in an economical package.**

- ▶ Wireless technology means it's quicker and easier to install, saving money
- ▶ Grow home automation as budget allows
- ▶ Power, simplicity, and reliability of Crestron is now a reality within reach



## SPECIFICATIONS

### Load Ratings

---

**Incandescent/Tungsten Halogen or Electronic Low Voltage:** 1000 Watts; 700 Watts, one side fin removed; 550 Watts, both side fins removed

**Magnetic Low Voltage or Neon/Cold Cathode:** 1000VA/750 Watts; 700VA/500 Watts, one side fin removed; 550VA/400 Watts, both side fins removed

**Fluorescent/High Intensity Discharge (HID):** 8 Amps; 5.5 Amps, one side fin removed; 4.5 Amps, both side fins removed

**Ceiling Fan:** 3 Amps

**Minimum Load:** 40 Watts, 0.5 Amps

### Power Requirements

---

120 Volts AC, 60Hz, line power, neutral required

### LED Indicator

---

(1) Amber LED, flashes in various patterns to warn when in SET mode, while counting down to turn-off, to confirm a new delay time setting, and to indicate setup and communication status; normally glows dim in RUN mode to provide a locating beacon in the dark

### Controls

---

**Button:** 2-position rocker pushbutton for on/off switch control and delay adjustment

**Mode Switch:** 3-position slide switch; selects RUN, SET, or OFF mode

### Wireless

---

**RF Transceiver:** 2-way RF, 2.4 GHz ISM Channels 11-26 (2400 to 2483.6 MHz), IEEE 802.15.4 compliant

**RF Output Power:** 10 mW

**Range (typical):** 150 feet indoor, 250 feet outdoor, subject to site-specific conditions;

**Gateway:** requires P-MNETGW gateway/transceiver

### Connections

---

**Hot:** (1) 14 AWG Class 1 flying lead, black, line power input

**Load:** (1) 14 AWG Class 1 flying lead, red, load output

**Neutral:** (1) 18 AWG Class 1 flying lead, white, neutral

**Ground:** (1) 16 AWG Class 1 flying lead, green, ground

### Environmental

---

**Temperature:** 32° to 104°F (0° to 40°C)

**Humidity:** 10% to 90% RH (non-condensing)

### Enclosure

---

1-gang mountable in a 3-1/2 inch deep electrical box;

### Dimensions

---

**Height:** 4.13 in (10.48 cm)

**Width:** 2.38 in (6.03 cm)

**Depth:** 1.88 in (4.77 cm)

### Weight

---

4.9 oz (0.67 kg)

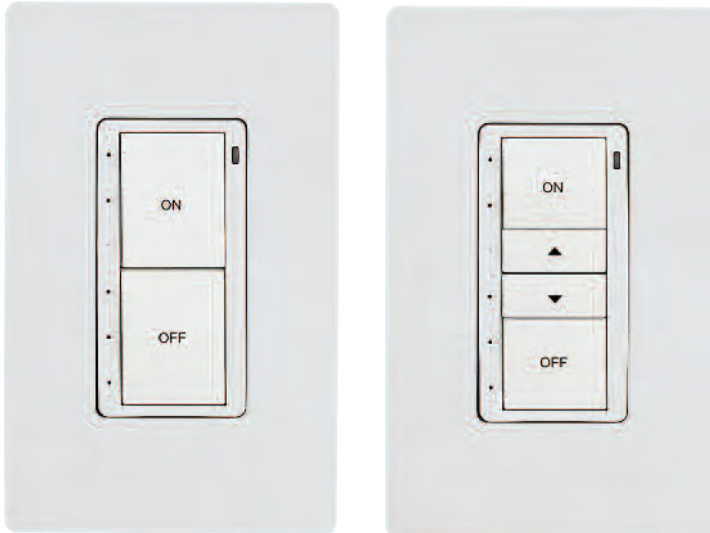
### Available Accessories

---

**P-MNETGW:** Wireless Gateway

# Lighting Control and Keypads

## P-CBD Prodigy® Lighting Keypad



The Prodigy® Lighting Keypad provides a quick and easy way to offer lighting control in more than one location. When paired with the Prodigy Dimmer and Prodigy Switch, the Lighting Keypad takes control without running additional wires. Because it's built on proven Crestron® wireless technology, you can count on it to work even in the most urban setting.

With Prodigy, adding a light switch at the bottom and top of the stairs, or turning off every light in the house from just one button is easy. Simply add a Lighting Keypad for the most simple and affordable home automation solution.

Prodigy was designed with you in mind, and its flexibility proves it. No matter if you've just built your home or have been there for years, Prodigy is the perfect solution. Whether installed in a new or retrofit location, standard electrical wiring eliminates the need to rip up walls or run special cable, making integration truly simple + affordable.

### Intelligent Control

**Simple operation from any room in the house.**

- ▶ Control lights from more than one place
- ▶ Robust and reliable Crestron wireless connectivity
- ▶ Power many sets of lights from just one button press

### Quick Installation

**The Prodigy line of products is designed for easy setup.**

- ▶ Automatic addressing
- ▶ Mounts in standard 1-gang box
- ▶ Fits any standard decorator wall plate
- ▶ No additional wires need to be run; simply install in gang box

### Simple Interface

**Straightforward, single button operation.**

- ▶ Intuitive and sleek interface
- ▶ Status LED provides feedback
- ▶ Configurable as two or four button keypad

### A Control Solution for Every Budget

**Now the innovation, flexibility and reliability of Crestron automation are available in an economical package.**

- ▶ Control lights from the Lighting Keypad or Prodigy Touchpanels
- ▶ Reliable wireless operation even in urban settings
- ▶ Expand to more rooms as budget allows

## SPECIFICATIONS

### Communications

---

**RF Transceiver:** 2-way RF, 2.4 GHz ISM Channels 11-26  
(2400 to 2483.6 MHz), IEEE 802.15.4 compliant

**Range (typical):** 150 feet indoor, 250 feet outdoor; Subject to site-specific conditions;

**Gateway:** Requires P-MNETGW RF gateway

### Connections

---

**HOT:** (1) Captive screw terminal, line power input

**NEUTRAL:** (1) Captive screw terminal

**GROUND:** (1) Captive screw terminal

### Buttons

---

**Keypad Buttons:** Configurable for 2 or 4 single-action pushbuttons

**Button Caps:** Includes labeled button caps; 2 button configuration: ON, OFF; 4 button configuration: ON, OFF, ▲ and ▼ .

### Backlight

---

White LED light pipe backlight for button engraving; Auto-dimmable

### LED Indicators

---

**Feedback:** (6) White LED light pipes

### Light Sensor

---

Photosensor for control of auto-dimming function;

Can be configured to report ambient light level to control system

### Power Requirements

---

120 Volts AC, 60Hz line power

### Environmental

---

**Temperature:** 32° to 113°F (0° to 45°C)

**Humidity:** 10% to 90% RH (non-condensing)

### Enclosure

---

Injection-molded plastic, 1-gang mountable in an electrical box using decorator style faceplate (not included)

### Dimensions

---

**Height:** 4.13 in (10.48 cm) without faceplate

**Width:** 1.79 in (4.55 cm) without faceplate

**Depth:** 1.87 in (4.74 cm)

### Weight

---

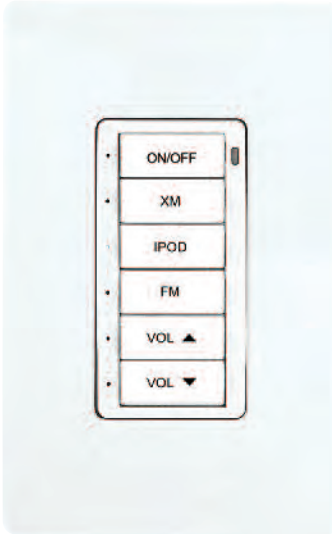
2.28 oz (63.84 g)

### Available Accessories

---

**P-MNETGW:** Wireless Gateway

## P-CBD-AD Prodigy® Audio Keypad



The Prodigy® Audio Keypad lets you select what you're listening to and adjust volume in each room of the home. Available in both wired and wireless versions, the Audio Keypad performs on proven Crestron® technologies to deliver a faultless user experience. Whether installed in a retrofit or new construction, the Audio Keypad brings the benefits of whole house audio distribution to any budget.

The understated, elegant appearance of the Audio Keypad provides direct control of audio from six pre-engraved, easy-to-read buttons. View source selection or volume feedback via unobtrusive, 6-segment white pinhole LEDs.

With the bidirectional feedback of Prodigy Remotes and Touchpanels, control of any audio zone is just a touch away. Combine the Audio Keypad with the Processor Amplifier, Radio Tuner, and IDOC to fill your entire home with the music and news you want, when you want it.

### Intelligent Control

**Intuitive operation with easy access to source selection or volume adjustments.**

- ▶ Control volume and source switching
- ▶ Robust and reliable Crestron wired and wireless connectivity
- ▶ Automatically recall preferred volume level

### Quick Installation

**The Prodigy line of products is designed for easy setup.**

- ▶ Automatic addressing
- ▶ Mounts in standard 1-gang box
- ▶ Fits any standard decorator wall plate
- ▶ No additional wires need to be run; simply install in gang box

### Simple Interface

**Straightforward, 6-button operation.**

- ▶ Intuitive functions for device selection and volume control
- ▶ Status LED provides feedback on operation
- ▶ Comprehensive selection of pre-engraved buttons

### A Control Solution for Every Budget

**Now the innovation, flexibility and reliability of Crestron automation are available in an economical package.**

- ▶ Start with just a few rooms, then expand to more as budget allows
- ▶ Control audio from keypad or other Prodigy Touchpanels and Remotes
- ▶ Reliable wireless operation even in urban settings

## SPECIFICATIONS (P-CBD-AD)

### Communications

**RF Transceiver:** 2-way RF, 2.4 GHz ISM Channels 11-26 (2400 to 2483.6 MHz), IEEE 802.15.4 compliant

**Range (typical):** 150 feet indoor, 250 feet outdoor; Subject to site-specific conditions;

**Gateway:** Requires P-MNETGW RF gateway

### Connections

**HOT:** (1) Captive screw terminal, line power input

**NEUTRAL:** (1) Captive screw terminal

**GROUND:** (1) Captive screw terminal

### Buttons

**Keypad Buttons:** 6 single-action pushbuttons

**Button Caps:** Includes assortment of labeled button caps; XM, SIRIUS, FM, AM, TV, CABLE, CABLE 1, CABLE 2, SATELLITE, SATELLITE 1, SATELLITE 2, IPOD, GAMES, APPLE TV, BLU-RAY, ROW, DVD, CAMERA, MEDIA PLAYER, CD, AUXILIARY 1, AUXILIARY 2, VCR, DVR, TIVO, VUDU, STREAMING, INTERNET, AM-FM, JUKEBOX, COMPUTER, THEATER, ON/OFF, VOL ▲, VOL ▼ and SOURCE.

### Backlight

White LED light pipe backlight for button engraving; Auto-dimmable

### LED Indicators

**Feedback:** (6) White LED light pipes, one per each of 6 small button positions;

### Light Sensor

Photosensor for control of auto-dimming function; Can be configured to report ambient light level to control system

### Power Requirements

120 Volts AC, 60Hz line power

### Environmental

**Temperature:** 32° to 113°F (0° to 45°C)

**Humidity:** 10% to 90% RH (non-condensing)

### Enclosure

Injection-molded plastic, 1-gang mountable in an electrical box using decorator style faceplate (not included)

### Dimensions

**Height:** 4.13 in (10.48 cm) without faceplate

**Width:** 1.79 in (4.55 cm) without faceplate

**Depth:** 1.87 in (4.74 cm)

### Weight

2.28 oz (63.84 g)

### Available Accessories

**P-MNETGW:** Wireless Gateway

## SPECIFICATIONS (P-CBD-AD-WIRED)

### Connectors

**NET:** 4-pin 3.5mm detachable terminal block; Connects to PAMP-4X100 network port

**INPUT:** (1) 3-pin 3.5mm detachable terminal block; Comprises (2) dry contact closure inputs

### Buttons

**Keypad Buttons:** 6 single-action pushbuttons

**Button Caps:** Includes assortment of labeled button caps; XM, SIRIUS, FM, AM, TV, CABLE, CABLE 1, CABLE 2, SATELLITE, SATELLITE 1, SATELLITE 2, IPOD, GAMES, APPLE TV, BLU-RAY, ROW, DVD, CAMERA, MEDIA PLAYER, CD, AUXILIARY 1, AUXILIARY 2, VCR, DVR, TIVO, VUDU, STREAMING, INTERNET, AM-FM, JUKEBOX, COMPUTER, THEATER, ON/OFF, VOL ▲, VOL ▼, SOURCE, ◀ and ▶.

### Backlight

White LED light pipe backlight for button engraving; Auto-dimmable

### LED Indicators

**Feedback:** (6) White LED light pipes, one per each of 6 small button positions;

### Light Sensor

Photosensor for control of auto-dimming function; Can be configured to report ambient light level to control system

### Power Requirements

**Network Power Usage:** 0.5 Watts (0.02 Amps @ 24 Volts DC)

### Environmental

**Temperature:** 32° to 113°F (0° to 45°C)

**Humidity:** 10% to 90% RH (non-condensing)

**Heat Dissipation:** 1.7 BTU/Hour

### Enclosure

Injection-molded plastic, 1-gang mountable in an electrical box using decorator style faceplate (not included)

### Dimensions

**Height:** 4.13 in (10.48 cm) without faceplate

**Width:** 1.75 in (4.44 cm) without faceplate

**Depth:** 1.20 in (3.05 cm) without connector

### Weight

2.28 oz (63.84 g)



## P-TSTATRF Prodigy® Thermostat



The Prodigy® Thermostat keeps your home the perfect climate while saving money and energy. Via intuitive graphical interfaces on Prodigy Touchpanels, simply set up weekly schedules so the home stays comfortable when you're there most. During the winter, limit heating during sunny hours. In the summer, prevent unnecessary cooling when the house is unoccupied. Schedule special set points for extended trips away from home. And if you forget to do any of this before you leave, simply connect via iPhone® or web browser to make adjustments from thousands of miles away.

Because it's built on proven Crestron® wireless technology, you can count on the Prodigy Thermostat to always stay connected, even in the most urban setting. Installation in retrofit or new construction is simple, too. The Prodigy Thermostat is engineered based on wiring standards for heating and cooling systems, so it can be used with virtually any HVAC system.

Let the Prodigy Thermostat keep giving back to you in the form of lower energy bills and a greener conscience. Complement Prodigy Dimmers and Switches for a complete energy saving solution that's easy to use. Control it all from just one touchpanel. Being green with Prodigy really is simple + affordable.

### Intelligent Control

#### Keep energy bills in check.

- ▶ Use energy when needed most to heat or cool
- ▶ Customizable schedule delivers the perfect climate
- ▶ Save money in the long run

### Quick Installation

#### Wireless integration means less time wiring.

- ▶ Connect to HVAC system using industry standards
- ▶ Mounts to horizontally oriented 1-gang box
- ▶ Simple integration with touchpanels via Prodigy Composer

### A Control Solution for Every Budget

#### Now greener automation is available in an economical package.

- ▶ Start with a single zone, then add as budget allows
- ▶ Power, simplicity, and reliability of Crestron is now a reality within reach

## SPECIFICATIONS

### Wireless

---

**RF Transceiver:** 2-way RF, 2.4 GHz ISM Channels 11-26 (2400 to 2483.6 MHz), IEEE 802.15.4 compliant

**Range (typical):** 150 feet indoor, 250 feet outdoor; Subject to site-specific conditions;

**Gateway:** Requires P-MNETGW RF Gateway

### Connectors

---

(4) 2-position terminal blocks comprising the following:

**RH:** Reference Heat – Used for calls to heating system;

**RC:** Reference Cool – Used for calls to cooling system;

**G:** Fan – Energized to RC during call for fan;

**Y:** Compressor – Energized to RC when compressor is run;

**C:** 24V AC common terminal supplies remote power to thermostat;

**W:** Heat – Energized to RH during a call for heat in heat/cool systems or aux heat in heat pump systems;

**O:** Changeover control – Energized to RC during cooling modes;

**B:** Energized to RC during heating modes;

### Buttons

---

**MODE:** Cycles through available System Modes: OFF, HEAT, AUX HEAT ONLY, and COOL

**FAN:** Toggles fan setting between FAN AUTO and FAN ON

**RAISE:** Raises the setpoint

**LOWER:** Lowers the setpoint

**HOLD (combination):** Pressing MODE and FAN buttons simultaneously enters/exits HOLD mode

**SETUP (combination):** Holding the FAN button, then pressing the RAISE and LOWER buttons simultaneously for 5 seconds enters SETUP mode; pressing mode button advances to next setup parameter/function; pressing RAISE or LOWER adjusts value of current setup parameter or executes current setup function; pressing FAN button exits SETUP mode

### Display

---

**Backlit LCD:** With (2) large 7-segment digits, (2) small 7-segment digits, (14) dedicated symbols;

Displays ambient temperature, setpoint, system mode, fan setting, call activity, low battery, RF or control system communication errors, firmware download progress, setup parameter/function and value

### Measurement Range

---

**Ambient Temperature:** -10° to 110°F (-23° to 43°C)

**Display Limits:** -9° to 99°F (-9° to 43°C)

### Setpoint Range

---

**Heat Setpoint:** 38° to 89°F (3° to 32°C)

**Cool Setpoint:** 59° to 99°F (15° to 37°C), or 38° to 99°F (3° to 37°C) extended cool mode enabled

### Relay Rating

---

1 Amp @ 40 Volts DC or 24 Volts AC (nominal)

### Environmental

---

**Temperature:** -10° to 110°F (-23° to 43°C)

**Humidity:** 10% to 90% RH (non-condensing)

### Power Requirements

---

**24V:** 0.24 Watts (10 mA) @ 24 Volts AC, supplied by heating or cooling system

**Battery:** (2) AA batteries required, estimated 1 year normal operation

### Housing

---

Injection-molded plastic, surface-mountable to the front of a horizontally-oriented 1-gang electrical box

### Dimensions

---

**Height:** 4.50 in (11.43 cm)

**Width:** 5.53 in (14.05 cm)

**Depth:** 1.03 in (2.60 cm)

### Weight

---

6.7 oz (0.19 kg)

# Other Related Products

## P-IDOCV Interface for Apple® iPod®



The IDOC lets you listen to music or watch videos from your iPod® throughout your home. Easily create any atmosphere desired with your favorite music and video collection. Without extra importing, ripping, or downloading, simply use your existing iPod as a home entertainment hub.

Placing your iPod, iPod touch®, or iPhone® into the IDOC interface transforms your personal music and movie collection into a high fidelity media server. Control what's playing from any Prodigy Touchpanel, Mac®, or PC. Best yet, syncing music and video content between your computer and iPod is automatic.

Because it's built by Crestron®, the IDOC is already proven as innovative and reliable. Take home the Crestron experience as well as all the features of the pros at an incredibly affordable price.

### Intelligent Control

**Controlling your iPod from anywhere in the house is now a reality.**

- ▶ Artist, song and album information is displayed on the Prodigy Touchpanel
- ▶ Scrolling list allows searching of iPods from any touchpanel at home
- ▶ Access the same playlists that appear on the iPod

### High Quality Audio + Video Outputs

**Transform your iPod into a Crestron media server.**

- ▶ Pair the IDOC with the Processor Amplifier for digital audio throughout the home
- ▶ Watch movies and TV shows on the big screen
- ▶ Enjoy simultaneous playback of multiple iPods

### A Control Solution for Every Budget

**Whole home media distribution is now available in an economical package.**

- ▶ Add the IDOC whenever the budget allows
- ▶ Connect to existing AV receiver or a Processor Amplifier
- ▶ Take advantage of media on existing iPods

## SPECIFICATIONS

### Compatibility

**iPod®:** For a complete list of supported products, refer to Crestron® Online Help Answer ID 4837, or contact Crestron True Blue Support at [www.crestron.com/trueblue](http://www.crestron.com/trueblue).

**Computer:** Crestron Sync software is compatible with Mac OS® X v10.5, Windows® XP, and Windows Vista®; Available at [www.crestron.com/crestronsync](http://www.crestron.com/crestronsync).

### Ethernet

10BaseT/100BaseTX, static IP or DHCP, DNS, full duplex, auto-switching, auto-negotiating, auto-discovery, TCP/IP, CIP, IEEE 802.3u compliant

### Connectors – Front Panel

**Device:** 30-pin male connector on rear for connection of 6.5 ft (2 m) 30-pin M to 30-pin F cable (included), connects to docking cradle

### Connectors – Rear Panel

**VIDEO OUT, COMP:** (1) RCA female; Composite video output; Output Level: 1 Vp-p nominal; Output Impedance: 75 ohms nominal

**VIDEO OUT, Y Pb Pr:** (3) RCA female; Component (YPbPr) video output; Output Level: 1 Vp-p nominal (Y), 0.7 Vp-p nominal (PbPr); Output Impedance: 75 ohms nominal

**AUDIO OUT, L – R:** (2) RCA female; Unbalanced stereo line-level audio output

**COMPUTER:** (1) USB Type B female; USB 2.0 port (cable included)

**LAN:** (1) 8-wire RJ45 with 2 LED indicators; 10BaseT/100BaseTX Ethernet port; Green LED indicates link status; Yellow LED indicates Ethernet activity

**PWR:** (1) 2-pin 3.5mm detachable terminal block; 24 Volt DC power input

### Indicators and Buttons

**SYNC:** (1) Yellow LED, indicates when internal iPod is synced to iTunes®

**PWR:** (1) Green LED, indicates 24 Volts DC power supplied from external power supply (included)

**DEVICE:** (1) Green LED, indicates an iPod is installed and connected

**SETUP (rear):** (1) Recessed miniature pushbutton and red LED for setting IP ID

### Power Requirements

**Power Usage:** 8 Watts (0.34 Amps @ 24 Volts DC)

**PW-2407W (included):** 100-240 Volts AC, 50/60 Hz

### Environmental

**Temperature:** 41° to 113°F (5° to 45 °C)

**Humidity:** 10% to 90% RH (non-condensing)

**Heat Dissipation:** 27 BTU/Hr

### Dimensions

#### Main module

**Height:** 2.04 in (5.17 cm)

**Width:** 8.00 in (20.32 cm)

**Depth:** 6.65 in (16.87 cm)

#### Docking station

**Height:** 1.68 in (4.26 cm)

**Width:** 3.96 in (10.05 cm)

**Depth:** 3.70 in (9.40 cm)

### Weight

4.30 lb (1.95 kg)

### Included Accessories

**PW-2407W:** Power Supply

**Stereo Audio Cable:** 6 ft

**Component Video Cable:** 6 ft

# Other Related Products

## PT-AMFMXM Radio Tuner



Complete your Prodigy® system with the affordable Radio Tuner. Designed by Crestron® for Prodigy, the Radio Tuner provides integrated AM/FM and XM® tuners so that you can listen to the news in the kitchen while filling the rest of the home with music. Change the channel and view song information from any Prodigy Touchpanel throughout the house with unprecedented ease. And because it's built for Prodigy, it's simple to set up.

The Radio Tuner is really three radios in one: AM, FM, & XM. Listen to AM or FM in high quality without having to deal with static or poor reception while simultaneously enjoying commercial free XM radio in a completely different room. Proven Crestron Radio technology takes over-the-air to the next level, delivering easy control and a crystal clear signal in an easy to integrate package. Just listen to how Prodigy is simple + affordable.

### Intelligent Control

**Take your radio to the next level.**

- ▶ Station, artist and song information is displayed on any Prodigy Touchpanel
- ▶ Select favorite stations from any touchpanel around the house

### Versatile Radio

**Multiple radios in one.**

- ▶ Listen to AM or FM in one room while listening to XM in another
- ▶ Station presets provide instant access to favorite programs

### A Control Solution for Every Budget

**Whole home audio distribution is now available in an economical package.**

- ▶ Add the Radio Tuner to your Prodigy system whenever budget allows
- ▶ Connect to existing AV receiver or a Processor Amplifier



## SPECIFICATIONS

### Connectors

**AUDIO OUT L/R:** (4) RCA female, unbalanced stereo line-level audio output;

**AUDIO OUT DIGITAL:** (1) RCA female, S/PDIF coaxial digital audio output (carries XM<sup>®</sup> audio only)

**AM ANTENNA:** (2) 2-pin spring-loaded terminal

**FM ANTENNA:** (1) Coaxial IEC 169-2

**XM ANT:** (1) F-Type Coaxial antenna connector; Impedance: 50 ohms; Connects to indoor/outdoor high-gain antenna (included); Includes 20-foot cable;

**NET:** (2) 4-pin 3.5mm detachable terminal block; connects to control network

**24VDC:** DC power input for PW-2407W power supply (included)

### AM Tuner

**Frequency Range:** 530 to 1710 kHz (9 or 10 kHz steps)

**Sensitivity:** 3.5µV (RF input level 10dB S+N/N)

**Selectivity:** 10kHz

**Alternate Channel Selectivity:** 55dB

**Image Rejection:** 35dB

**IF Rejection:** 60dB

### FM Tuner

**Frequency Range:** 87.50 to 108 MHz (50 or 100 kHz steps)

**Usable Sensitivity:** 11dBf mono; 60dBf stereo

**S/N Ratio:** 64dB @ 65dBf mono; 56dB @ 65dBf stereo

**IF Rejection:** 100dB

**AM Rejection:** 55dB

**Stereo Separation:** 27dB

### XM<sup>®</sup> Tuner

**THD+N:** <0.01% @1kHz

**S/N Ratio:** >97dB balanced, >95dB unbalanced, 20Hz-22kHz A-weighted

**Crosstalk:** >-90dB 20Hz-22kHz

### Display

Green LED 7-segment digits;

Displays signal source, signal strength, and channel

### Power Requirements

**Power Usage:** 8 Watts (0.34 Amps @ 24 Volts DC)

**PW-2407W (included):** 100-240 Volts AC, 50/60 Hz

### Buttons

**MENU:** (1) pushbutton, cycles through menu modes

**UP/DOWN:** (2) pushbuttons, select channel, and select signal strength source (satellite or terrestrial repeater)

**ENTER:** (1) pushbutton, selects mode

**AM:** (1) pushbutton, selects AM

**FM:** (1) pushbutton, selects FM

**XM:** (1) pushbutton, selects XM

**DISP:** (1) pushbutton, changes display to show additional information

**RESET:** (1) recessed miniature pushbutton

### Environmental

**Temperature:** 41° to 113°F (5° to 45 °C)

**Humidity:** 10% to 90% RH (non-condensing)

**Heat Dissipation:** 27 BTU/Hr

### Dimensions

**Height:** 2.04 in (5.17 cm)

**Width:** 8.00 in (20.32 cm)

**Depth:** 6.65 in (16.87 cm)

### Weight

4.30 lb (1.95 kg)

### Included Accessories

**PW-2407W:** Power Supply

**XM Antenna:** Indoor/Outdoor

## PAMP-4X100 Processor Amplifier



Bring the soundtrack of your life to every room with the Processor Amplifier, exclusively designed by Crestron® for Prodigy® systems. Let Prodigy set the atmosphere at home, delivering luxurious sound at an affordable price. Designed with your future in mind, Prodigy lets you start small, then go big.

Built on Crestron expert engineering, the Processor Amplifier affords you all of the features of the pros. Multi-zone audio distribution means any source in any room. Relax to a favorite XM® station in the kitchen, while the kids rock out to the latest on their iPod® in the bedroom. Adding iPods and radio to a Prodigy system is easy with the IDOC and Radio Tuner, filling every room in your home with high quality audio.

Over time needs may change. Start with just a few rooms today, and then add more tomorrow. Bringing audio to more rooms in your home is as easy as adding Processor Amplifiers to your existing system. Prodigy Keypads and Touchpanels make expansion even easier. Prodigy technology delivers more for less.

### High Quality Audio Distribution

**Each Processor Amplifier provides four zones of full, room-filling audio.**

- ▶ Volume control and source selection in each room
- ▶ Treble, bass, and balance control right from the touchpanel
- ▶ 100 Watts of audio in every zone
- ▶ Bridgeable outputs for higher power speakers

### Flexible Setup + Control

**Easily expand as needs change.**

- ▶ Daisy chain additional Processor Amplifiers to grow system
- ▶ Make the theater an audio zone
- ▶ Intuitive user interface from Prodigy Keypad, Touchpanel, and Handheld remote
- ▶ Control audio around the home with iPhone® or iPod touch®
- ▶ Front panel controls for source selection and volume control

### Smart Design

**Experienced engineering delivers pro features.**

- ▶ Expandable to accommodate future growth
- ▶ Convenient front panel control includes interchangeable labels to make room identification a snap
- ▶ Built-in fault protection

### A Control Solution for Every Budget

**High quality whole home audio distribution and control is now available for every budget.**

- ▶ Start with four zones and add on as needs and budget allow
- ▶ Feature-rich controls without an exclusive price
- ▶ Network ports provide proven & reliable communication with other Prodigy devices

## SPECIFICATIONS

### Audio

---

**Controls:** Volume, Balance, Bass, Treble, Loudness, Mute, Mono, Input Compensation

**Volume:** Gain Range -80dB to +20dB, 1 dB steps

**Mute:** 100dB (electronic), -120dB (relay)

**Input Compensation:** ±10dB

**Bass Gain Range:** ±12dB @ 100Hz, 2 dB steps

**Treble Gain Range:** ±12dB @ 10kHz, 2 dB steps

**Frequency Response:** 20Hz to 20kHz ±1.0dB

**S/N Ratio:** 103dB, 20Hz to 20kHz A-weighted

**THD+N:** 0.8%, 20Hz to 20kHz

**Stereo Separation:** >70dB

### Connectors

---

**SOURCES 1 – 6:** (24) RCA female comprising (6) unbalanced stereo line-level audio inputs with parallel loop-thru outputs for connecting additional PAMP-4X100 units or other audio preamplifier/receiver

**NET 1-4:** (4) 4-pin 3.5mm detachable terminal blocks; control network master ports, provide data and power to Prodigy devices

**NET Loop-Thru:** (2) 4-pin 3.5 mm detachable terminal block for connecting additional PAMP-4X100 units

**ROOMS 1-4:** (4) 4-pin 5mm detachable terminal blocks, power amplifier outputs; Wire Size: 12 AWG maximum; Output Power (per channel) 50 Watts at 8 ohms, 75 Watts at 4 Ohms; Bridging; Outputs 1+2 and 3+4, 8 ohm load only

**120V~60 Hz:** (1) IEC Male; Mates with removable power cord (included)

### Buttons and LED Indicators

---

**SOURCE:** (6) Pushbuttons with green LEDs and labeling strip; selects source to route; Source Labels: XM, SIRIUS, FM, AM, TV, Cable, Satellite, iPod, Game Console, Apple TV, Blu-ray, DVD, Camera, Media Player, CD, Auxiliary 1, Auxiliary 2, VCR, DVR, TiVo, Vudu, Streaming, Internet Radio, AM-FM, Media System, Computer

**ROOM:** (4) Pushbuttons with green LEDs and labeling strip; selects room destination of source; Room Labels: Living Room, Family Room, Theater, Kitchen, Master Bed, Master Bath, Master Suite, Bedroom, Bathroom, Guest Suite, Hallway, Media Room, Powder Room, Dining Room, Outside, Pool Area, Patio, Deck, Basement, Game Room, Office, Foyer, Gym, Loft, Playroom, Dinette, Library, Sitting Room, Kids Room, Kids Room 1, Kids Room 2, Kids Room 3, Atrium, Entrance, Dressing Room, Observatory, Solarium, Lanai, Play Room

**VOLUME:** 2-position up/down pushbutton, adjusts volume of selected room

### Power Requirements

---

**Main Power:** 120 Volts AC, 60 Hz

**Available Network Power:** 5 Watts per each "NET 1-4" connection (no power on "Loop-Thru"); 24 Volts DC

### Environmental

---

**Temperature:** 41° to 122°F (5° to 50°C)

**Humidity:** 10% to 90% RH (non-condensing)

### Dimensions

---

**Height:** 3.56 in (9.04 cm); 3.47 in (8.81 cm) without feet

**Width:** 17.03 in (43.26 cm)

**Depth:** 8.67 in (22.02 cm)

### Weight

---

20.0 lbs (9.0 kg)

## P-EXPEX Prodigy® Wireless Expander



The Prodigy® P-EXPEX is a 2-way RF wireless expander designed to extend the range of one or more PTX3s in a Prodigy network. Requiring only a standard AC power outlet, the P-EXPEX can be installed easily and discreetly, filling any "dead" space between two or more rooms.

The P-EXPEX utilizes mesh network technology of 802.15.4, affording reliable communications and control without the need to run additional wiring. Whether installed in retrofit or new construction, the P-EXPEX provides a low cost, multi-room solution, bringing the benefits of automated control to any budget.

### Easy Setup

**Dynamic discovery automatically acquires each device.**

- ▶ Plug in to any standard AC receptacle
- ▶ Wi-Fi friendly channel assignment
- ▶ Push button to acquire to Central Controller

## SPECIFICATIONS

### Wireless

**RF Transceiver:** 2-way RF, 2.4 GHz ISM Channels 11-26 (2400 to 2483.6 MHz), IEEE 802.15.4 compliant

**RF Transmitting Power:** > 5 mW

**Range (typical):** 150 feet indoor, 250 feet outdoor, subject to site-specific conditions

**Gateway:** Requires PMC2

### Indicators and Buttons

**Acquire:** (1) Recessed pushbutton with red LED, used to configure the wireless network

**Setup:** (1) Recessed pushbutton with red LED, used for touch-settable ID (TSID)

### Connectors

**Line:** (1) Grounded AC plug

### Power Requirements

120 Volts AC, 60 Hz

### Enclosure

White high-impact injection-molded plastic

### Environmental

**Temperature:** 32° to 104°F (0° to 40°C)

**Humidity:** 10% to 90% RH (non-condensing)

### Dimensions

**Height:** 5.71 in (14.5 cm)

**Width:** 3.13 in (8.0 cm)

**Depth:** 1.74 in (4.4 cm)

## P-MNETGW Prodigy® Wireless Gateway



The Prodigy® P-MNETGW is a 2-way gateway transceiver that provides communications for Prodigy Dimmers, Switches, Thermostats, and Keypads. Built on proven Crestron® wireless technology, it affords reliable communications and control without the need for additional wiring. Whether installed in a retrofit or new construction, the P-MNETGW provides a low cost wireless solution, bringing the benefits of automated control to any budget.

### Easy Setup

**Dynamic discovery automatically acquires each device.**

- ▶ Connect to PMC2 with simple Prodigy network connection
- ▶ Wi-Fi friendly channel assignment
- ▶ Push button to acquire multiple devices

## SPECIFICATIONS

### Wireless

**RF Transceiver:** 2-way RF, 2.4 GHz ISM Channels 11-26 (2400 to 2483.6 MHz), IEEE 802.15.4 compliant

**RF Transmitting Power:** 10 mW

**Range (typical):** 150 feet indoor, 250 feet outdoor, subject to site-specific conditions

### Indicators and Buttons

**PWR:** (green) Indicates DC power supplied from network

**NET:** (yellow) Indicates communication with the system

**RXD:** (red) Indicates data is being received from wireless network devices

**TXD:** (red) Indicates data is being transmitted to wireless network devices

**ACQUIRE:** (1) Recessed pushbutton with red LED, used to configure the wireless network

**SETUP:** (1) Recessed pushbutton with red LED, used for touch-settable ID (TSID)

### Connectors

**NET:** (1) 3.5mm detachable terminal block; connects to Prodigy® control network

### Power Requirements

**Power Usage:** 3 Watts (0.125 Amps @ 24 Volts DC)

### Enclosure

Black metal, freestanding or surface mount

### Environmental

**Temperature:** 32° to 104°F (0° to 40°C)

**Humidity:** 10% to 90% RH (non-condensing)

### Dimensions

**Without antenna**

**Height:** 1.24 in (3.15 cm)

**Width:** 2.47 in (6.28 cm)

**Depth:** 3.88 in (9.85 cm)

### Weight

8.3 oz (0.24 kg)



# prodigy<sup>®</sup> by Crestron

Crestron is the global standard in home automation. Installed in more homes worldwide than any other brand, Crestron brings years of experience and success to this latest line of home technology. Prodigy is a very simple and affordable entertainment and control solution, delivering the power, flexibility and reliability of Crestron to more people and more homes than ever before.



Now every house can be a Crestron home.









# Global Presence Local Support

Crestron has been setting the standard for technical innovation, quality and support for more than forty years. The unparalleled global infrastructure of Crestron spans every continent and serves 90 countries.



The award-winning Crestron True Blue Support Team is an unparalleled group of dedicated professionals who are always on call and provide a network of the most dedicated, talented professionals nearby to guide you through the sales, design and installation processes.



## Award-Winning Technology



Crestron's spirit of innovation has resulted in the most award-winning products in the industry.



# prodigy®

#### **Crestron World Headquarters**

15 Volvo Drive  
Rockleigh, NJ 07647  
800.237.2041  
201.767.3400  
Fax: 201.767.1903  
**crestron.com**

#### **Crestron International Headquarters**

Oude Keerbergebaan 2  
2820  
Rijmenam  
Belgium  
+32.15.50.99.50  
Fax: +32.15.50.99.40  
**crestron.eu**

#### **Crestron Asia Headquarters**

Room 2501, 25/F, Westin Centre  
No. 26 Hung To Road  
Kwun Tong  
Hong Kong  
+852.2341.2016  
Video Ph: +852.2373.7530  
Fax: +852.2344.0889  
**crestronasia.com**



**Products manufactured in the United States.**

©2010 Crestron Electronics, Inc. All brand names, product names and trademarks are the property of their respective owners.

Printed in USA Doc. 4732D 2/10